

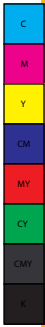
Protecting your car for the road

All our customer protection options
explained for you

Windsor
Drive happy



Welcome to Windsor





At Windsor, we're committed to you always driving happy. And it's why we appreciate that a major factor in driving happy is knowing your investment is solidly protected throughout the ownership of your vehicle. For us, making sure you have a rewarding customer experience doesn't end when you drive off the forecourt.



In this booklet, we'll outline a range of options for you to consider that can protect you against potential risks and happily minimise ongoing maintenance costs.

Adjustable to your individual needs, our comprehensive protection package includes:



Supagard Paint and Fabric Protection P8



SMART Insurance P10



Combined Guaranteed Asset Protection (GAP) P12



Mechanical Breakdown Warranty P16



AA Roadside Assistance P20

Everyone's needs are different, so make sure you chat with one of our staff members who'll be delighted to run through your options and help you arrive at a protection plan that's really right for you.

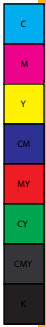
The benefits of these products, terms and conditions and prices can be found here:

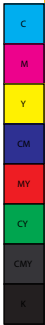
www.windsor.ie/customer-protection-options-terms



Learn more

To learn more about these products and prices, or to order them in advance of collecting your new vehicle, please scan the QR code below or go to www.windsor.ie/customer-protection-options-terms.







Supagard Paint and Fabric Protection

Paint and fabric protection guaranteeing that 'new' appearance.



Supagard® Paint and Fabric Protection – The Professional's Choice

Supagard® paint and fabric protection products are guaranteed to maintain your car's appearance for a **Lifetime guarantee**.

That means your car retains the same superb look it had when you first bought it so you can drive happy in the knowledge that your car looks as good as ever. You'll also be happy knowing that keeping your car in pristine shape helps maintain its value when you come to sell it.



Paintwork Protection

All Supagard® products have been developed to withstand the harshest environmental and climatic conditions and our Paint Sealant is one of the most technologically advanced treatments available. This tough polymer barrier bonds to the paintwork, leaving a high gloss finish. It also seals the surface against harmful acid rain and atmospheric pollutants and eliminates the need to wax and polish. Better still, Supagard® is professionally applied by trained technicians and all you have to do is wash the car. What could be simpler?



Fabric Protection

And when your car's interior is protected by Supagard®, there's no need to cry over spilled milk, or chocolate, or mud! Our technicians coat each fibre of fabric seats and carpets with a resin based formula which makes the removal of dirt and spills easy. This coating prevents staining while at the same time preserves the texture and appearance of the interior. Dirt and spills can be vacuumed or wiped off with a gentle cleaning solution while this invisible barrier also helps reduce friction between fibres which prolongs their life.

Everyone's needs are different, so make sure you chat with one of our staff members to discuss your specific requirements.

SMART Insurance



Ever noticed minor damage on your vehicle and wish it could be easily repaired – without damaging your no-claims bonus?

The SMART Insurance policy from Windsor Motor Group provides a small body repair system that will keep your vehicle in showroom condition, without compromising your no-claims bonus.

The policy ensures your vehicle remains free from chips, minor dents, light scratches and scuffs.

With a SMART Insurance policy from Windsor Motor Group, your vehicle is covered for damage caused by everyday motoring.

The most convenient way for you to submit your claim is to download our SMART app but if you prefer you can go online or give us a call. We're here for you, whatever way suits.

Benefit the Smart Insurance way:

- 36 months' cover
- Keep your vehicle in showroom condition
- Safeguard your no-claims bonus
- Repairs guaranteed for as long as you own the vehicle
- Friendly and convenient claims centre
- Could help improve your vehicle re-sale price
- Unlimited number of claims
- Aggregate claim benefit of €3,000

Should any claim not qualify as a SMART repair, up to a €250 contribution will be paid towards a body-shop repair (upon receipt of a valid invoice).

Protects the showroom condition of your new car



Scratches



Dents



Scuffs



Chips

The SMART Insurance policy covers:

- Private vehicles up to 36 months
- €3,000 benefit for cover against:
 - dents not exceeding 30cm in diameter
 - scratches not exceeding 30cm in length
 - chips not exceeding 1.5mm in diameter
 - bumper scuffs not exceeding 30cm in diameter

The SMART Insurance policy excludes:

- Panel replacement
- Stickers and decals
- Beading and mouldings
- Third-party liability cover
- Replacement bumpers
- Cracked or dented bumpers

This policy does not cover panel replacement, stickers and decals, beadings and mouldings, cracked or dented bumpers or their replacement. Repairs will only be undertaken if an invisible result can be achieved using SMART technology. Third party liability is excluded.

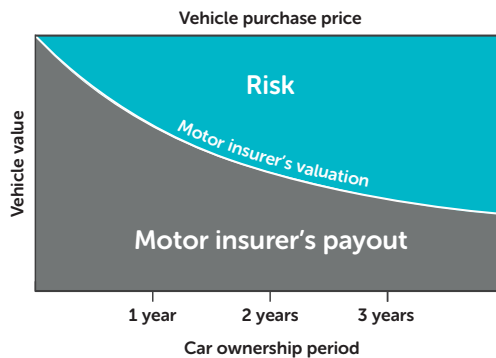
f This facility is only available to customers that hold live SMART policies.



Combined Guaranteed Asset Protection

When purchasing a vehicle you need to consider protecting yourself against probably the single biggest financial risk associated with ownership; the risk of your vehicle being declared a write-off.

Your comprehensive motor insurance does not cover everything. In the event of your vehicle being declared a write-off, you could be left with a significant difference between your motor insurance payout and what you paid for the vehicle or owe your finance company. The graph below is an example of how motor insurance works.

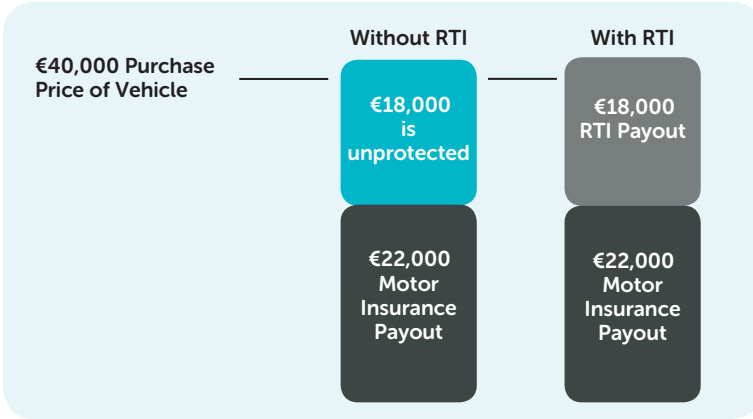


Motor insurance only covers you for the market value of your vehicle at the time it is declared a write-off.

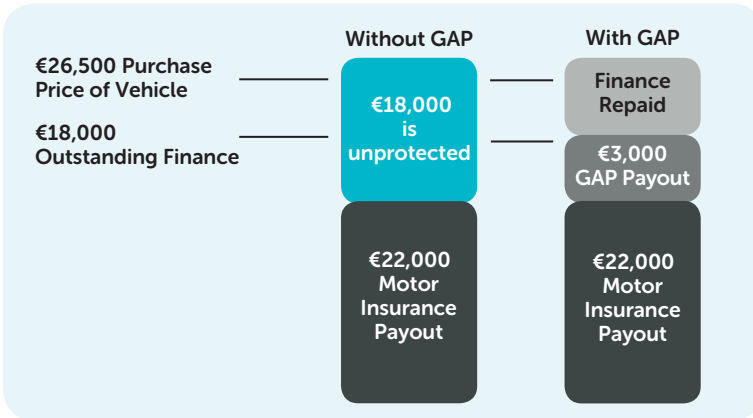
Combined Guaranteed Asset Protection is subject to the terms and conditions contained in the policy schedule. You should note that there are certain limitations in terms of the maximum amount you may claim. Please ask your sales executive for further details.

How Combined Guaranteed Asset Protection cover works

Return to Invoice (RTI) Insurance



Finance Guaranteed Asset Protection (GAP) Insurance



Can you give me an example?

If you bought your vehicle outright and paid €40,000 for it and your motor insurance payout is €22,000, RTI can pay up to the difference of €18,000 to top it up to the original €40,000. If you financed your vehicle and paid €40,000 and your motor insurance payout is €22,000, and your outstanding finance payment was €25,000 Finance GAP insurance may pay out up to €3,000.

Combined Guaranteed Asset Protection will pay out the greater of the Finance GAP or RTI amount.



Combined Guaranteed Asset Protection

Significant benefits

Policy duration

Cover is available for varying durations, depending on your requirements and according to the terms of your finance agreement. Cover ends earlier in the event of a paid claim or if the vehicle is no longer in your possession.

Excess

Provides a contribution of up to €500 towards your motor insurance policy excess.

Claim

A range of claim limits are available depending on the premium paid and the purchase price of your vehicle.

Vehicle accessories covered

As long as accessories are fitted by the dealer and are manufacturer approved, we will cover up to €1,500 of extras. Manufacturer fitted accessories are covered.

Transferable

If during the first year of cover, the vehicle is written off and you get a replacement vehicle on a "new for old" basis, you can transfer the remaining duration of the policy to your replacement vehicle free of charge. You may then subsequently, at any time, transfer any remaining period of insurance on the policy due to a further change of vehicle, on payment of an administration fee of €35, as long as the replacement vehicle falls within the price range specified in your policy schedule.

Cancellable

If, for any reason, you wish to cancel your policy and you do so within 30 days, and no claim has been registered with AutoProtect during this time, we will give you a full refund. After that, you may still cancel at any point, subject to a €35 administration fee. You will receive a pro-rata refund reflecting the length of the term remaining.

Simple to arrange

Your sales executive will be happy to answer any questions you may have and confirm your eligibility for Combined Guaranteed Asset Protection.

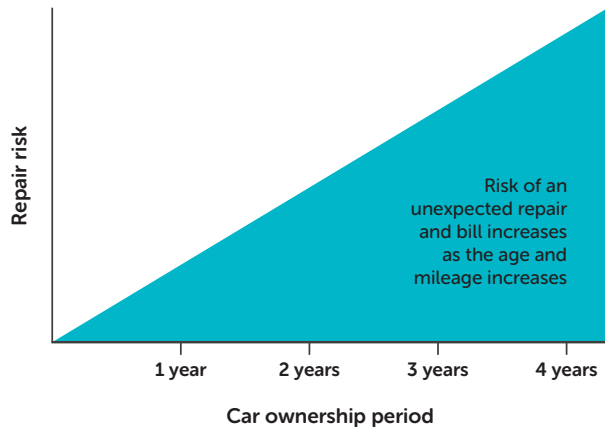




Mechanical Breakdown Warranty

When purchasing a used vehicle you need to consider how you will protect yourself against any unforeseen costs during the period of ownership.

No one plans for an unexpected repair bill but as your car increases in age and mileage, so does the risk of mechanical failure.



Windsor's warranty has been designed to protect you against the costs incurred in the event of an electrical or mechanical failure of a covered component or breakdown/immobilisation of the vehicle.*

All mechanical and electrical components are included against any mechanical breakdown during the warranty period, provided that the terms and conditions of the agreement are fully complied with. Refer to the warranty schedule for conditions and exclusions.

All mechanical and electrical components including failure due to wear and tear

Engine

The rocker assembly, including hydraulic followers

- Inlet and exhaust valves (not burnt valves)
- Springs and guides
- Cylinder head (not cracks, de-coking or porous heads)
- Cylinder head gasket (except skim)
- Push rods
- Camshaft and followers
- Timing gears and chains (excluding tensioners and connected electrical devices)
- Oil pump
- Pistons and rings
- Cylinder bores (excluding cracked or porous bores)
- Con rods
- Gudgeon pins and bearings
- Crankshaft and bearings
- Inlet manifold
- Flywheel and ring gear
- Timing belts are included provided that the last due change of belt has taken place

Manual Gearbox

- Internal gears
- Synchromesh hubs
- Selectors
- Shafts
- Bearings, bushes and transfer gears (excluding oil leaks)

Automatic Gearbox

- Internal shafts
- Gears
- Clutches
- Brake bands
- Valve block

- Governor
- Oil pump
- Bearings and bushes
- Servo
- Drive plate and transfer gears (excluding oil leaks)

Torque Converter

Differential

- Internal crown wheel and pinion
- Gears
- Shafts
- Bearings and bushes

Clutch

- Centre plate
- Pressure plate
- Release bearing
- Oil contamination (centre plate only)
- Master and slave cylinders

Front-wheel Drive

- Drive shafts including constant velocity joints
- Universal joints and couplings (not gaiters)

Wheel Bearings

- Front and rear wheel bearings

Propshaft

- Universal joints and couplings

Rear-wheel Drive

- Half shafts
- Rear-wheel external drive shafts, including constant velocity joints, universal joints and couplings (not gaiters)



Mechanical Breakdown Warranty

Fuel System (Diesel and Petrol)

- Automatic choke
- Lift pump
- Mechanical or electrical fuel pumps and tank sender unit

Fuel Injection System

- Throttle body
- Airflow meter
- Idle control valve
- Warm up regulator and map sensor (except injectors and heater plugs)
- Overrun cut off valve
- Throttle potentiometer
- Fuel accumulator
- Pressure regulator

Engine cooling system

- Radiator
- Oil cooler
- Heater matrix
- Water pump
- Viscous fan coupling
- Thermostat and thermostat housing

Steering

- Steering (including power assisted steering)
- Steering rack and pinion (not gaiters)
- Steering box
- Power steering rack and pump
- Power steering reservoir and idler box

Front and Rear Suspension

- Hydrolastic displacers and hydropneumatic spheres.
- Coil springs
- Upper and lower wishbones.
- Ball and swivel joints
- Shock absorbers

Brakes

- Brake master cylinder
- Wheel cylinders
- Electronic handbrake
- Brake calliper seals
- Servo

Electrical System

- Starter motor and solenoid
- Alternator
- Window and sun roof motors
- Electric window switches
- Sunroof switch
- Central locking motors
- Heater fan motor
- Indicator flasher relay
- Front and rear windscreen wiper and washer motors
- Thermostatically-controlled radiator fan motor
- Horn
- Multi-function stalk switch

Working Materials

- Oils, oil seals and gaskets
- Oil filter and anti-freeze

Casings

If any of the included parts fail and this damages the casing, it will also be included

Four-wheel Drive

All four wheel drive components are included

Air Conditioning (Factory Fitted)

The air conditioning compressor unit is included

Turbo Charger (Factory Fitted)

Anti-Locking Brake System
(Factory Fitted)

Catalytic Convertors
(Factory Fitted)

In Car Entertainment
(Factory Fitted)

Satellite Navigation
(Factory Fitted)

IN ADDITION

Oil Seals

Crankshaft front seal, camshaft oil seal, auxiliary shaft oil seal, gearbox rear seal, drive shaft(s) seals and differential pinion seal

Working Materials

Oils, oil filter and anti-freeze are included only if it is essential to replace them because of the failure of a part which is included in this agreement

Casings

If any of the parts included fail and damages the casings, they will also be included

Excluded

Body, paint, glass, interior/exterior trim. Cracked or porous cylinder heads and bores, skimming/pressure testing, burnt valves, wheels, airbag, electrical wiring and wiring looms, hoses, pipes, brake seizure and corrosion. Service items and other components subject to routine maintenance or periodic repair or replacement such as plugs, HT leads, brake frictional material, clutch facings, wiper blades/rubbers, auxiliary belts, cables, light bulbs/units, batteries, tyres and exhaust systems.

EV batteries are excluded from warranty cover.

Important Conditions

- Your car must be kept serviced to the manufacturer’s schedule as failure to do so could invalidate your warranty.
- All warranty work must be authorised prior to work being carried out.

* The benefits summarised above are subject to the terms and conditions. There are also certain limitations in the maximum amount paid in the event of a breakdown. Please ask your supplying dealer for further details.

The claims limit is the purchase price of the vehicle



AA Roadside Assistance. Peace of mind as standard.

Every AA Approved car comes with...

Key benefits.



Free AA roadside rescue with nationwide towing to nearest Windsor dealership.



48-hour car hire for onward travel, overnight accommodation and expenses.



Home start with recovery to nearest Windsor dealership.



AA rewards, including 3c & 6c off every litre of selected Circle K fuels.*



up to €250 discount on AA insurance products.



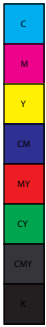
Contact centre open 24/7, 365 days a year.



Unlimited nationwide tow mileage and up to 5 tows per year.

Download the app.

Members can download the AA app to avail of discounts.



Get in touch

Scan the QR code to find out more
or visit windsor.ie/contact-us/.



Windsor
Drive happy

